



# BEAVER BLESSINGS

January 2024



RECONCILING MINISTRIES NETWORK

***"Welcoming all with God's love, serving all in God's name as we all grow in faith together"***

Beaver Memorial United Methodist Church · 42 South 3<sup>rd</sup> Street · Lewisburg · PA · 17837

[www.beavermethodist.org](http://www.beavermethodist.org) · (570)524-0809



**Sunday Morning Worship Services - 10:30 am**  
**New Beginnings Adult Sunday School Class – 9:00 am**

**From Pastor Sue's Desk:**

As we move into a new year, and after all of the difficult and challenging events of the past year, I want to begin the year with some humor. I have a folder labeled Bits & Pieces on my computer where I keep fun and/or thought provoking articles that I run across in my reading, and sometimes use them as the basis for this missive. I had the below in it and searched the internet to find an author. They were on a couple of different websites, with no attribution for an author. They are humorous computer error messages written in the form of Haiku. Haiku poetry has strict construction rules. Each poem has only three lines, 17 syllables – five syllables in the first line, seven in the second, five in the third. As one who is a bit technically challenged, they made me chuckle and I hope they bring a smile to your face. And I wish you and your loved ones a happy and blessed New Year!

The Web site you seek  
 Cannot be located, but  
 Countless more exist.

Chaos reigns within.  
 Reflect, repent, and reboot.  
 Order shall return.

Windows NT crashed.  
 I am the Blue Screen of Death.  
 No one hears your screams.

Yesterday it worked.  
 Today it is not working.  
 Windows is like that.

First snow, then silence.  
 This thousand-dollar screen dies  
 So beautifully.

Stay the patient course.  
 Of little worth is your ire.  
 The network is down.

A crash reduces  
 Your expensive computer  
 To a simple stone.

Three things are certain:  
 Death, taxes and lost data.  
 Guess which has occurred.

You step in the stream,  
 But the water has moved on.  
 This page is not here.

Serious error.  
 All shortcuts have disappeared.  
 Screen. Mind. Both are blank.

A file that big?  
It might be very useful.  
But now it is gone.

Having been erased,  
The document you're seeking  
Must now be retyped.

## DECEMBER FEATURES

### ➤ **How do United Methodists celebrate Epiphany/Three Kings Day?**

Epiphany is the day Christians remember the coming of the Magi to visit Jesus, bringing their gifts of gold, frankincense and myrrh.

It occurs on Jan. 6 every year, the 13th day of the Christmas season. The word "epiphany," from the Greek word epiphania, means appearance or manifestation.

The arrival of these visitors was a sign that the incarnation of God in Christ had been made known and was recognized by the heavens to the whole world, so that even Gentile wise men from the East came to pay him homage. This is an observance of great majesty, solemnity and awe.

An even more ancient Christian celebration than Christmas, Epiphany originally focused on the nativity, God's incarnation (God made flesh) in the birth of Jesus Christ, and Christ's baptism. After the late fourth century, as Advent developed as a season of baptismal preparation in addition to Lent, Epiphany became associated with baptism. This is why we see images of the three Magi on many older baptismal fonts.

In many Hispanic cultures, Epiphany is a day of great rejoicing and celebration, often kicked off by a parade the night before in which people dressed as the three kings or carrying statues of the three kings pass through the towns and villages throwing out candy and small gifts to all around. Families and children alike look forward to Día de Los Tres Reyes (Three Kings Day) as a time for presents, feasting and celebration. Attending church services that include the celebration of communion is also common in many of these cultures, even for those who may not attend worship regularly.

In England and some other European cultures, Jan. 5 is known as Twelfth Night, the culmination of the 12 days of Christmas feasting and partying. On Twelfth Night, many families gather in homes to celebrate with friends, food, singing and gifts. It is at these Twelfth Night celebrations that "Chalking the Door," (see the following feature for more on Chalking the Door) asking God's blessing on those dwellings and upon all who live there, is most often observed.

In New Orleans, Twelfth Night begins another season of celebrations that comes to fulfillment at Mardi Gras (Fat Tuesday, the day before Ash Wednesday). Epiphany itself, Jan. 6, becomes the kickoff day for that season, but is also often observed with a full celebration in church, complete with incense, elaborate processions, choral celebrations, and Eucharist.

Some United Methodists in the United States, who are not part of these rich traditions, tend to recognize Epiphany on the Sunday nearest Jan. 6. There may be a pageant of the three kings as part of worship that day and a small party afterward.

In whatever ways you decide to celebrate it, remember at the heart of your celebration are the Magi kneeling, worshipping and offering gifts to Jesus, Messiah for all people.

Source is UMC.org.

## ➤ **An Epiphany Blessing of Homes and Chalking the Door**

In some parts of the world, particularly Great Britain, there is a custom of gathering in places of residence or work (generically called "homes") to ask God's blessing on those dwellings and upon all who live, work, and visit there. This article includes information on these gatherings, some suggestions for their use by United Methodist families, churches, and other "homes".

### What Is a Chalking the Door Service?

This short liturgy is a way of marking our homes, usually at the front or main entrance, with sacred signs and symbols as we ask God's blessing upon those who live, work, or visit throughout the coming year. In Exodus, the Israelites marked their doors with blood so that the Lord would pass over their homes; but in this service, we mark our doors with chalk as a sign that we have invited God's presence and blessing into our homes.

### Where May the Service Be Used?

Although the service is intended for use in private family dwellings, it is certainly appropriate when adapted for use in offices, apartments, college dormitories, choir rooms, Sunday school classrooms, churches, places of business, and — perhaps especially — in nursing homes, hospitals and hospital rooms, and extended-care facilities. This liturgy is also appropriate as a devotional at choir practice, at the January meeting of the church board of trustees, as a children's sermon, in visits to hospital and nursing home rooms, as well as in your own home.

### When Should the Service Be Used?

Due to the linking of the liturgy to the visit of the three Magi, it is most appropriately used at the start of the season of Epiphany. But because the service is so flexible in where it may be used, it might be used any time during the seasons of Christmas and Epiphany — or as part of a celebration observing the changing of the secular calendar from one year (or millennium) to the next.

In Great Britain, the service commonly takes place on Twelfth-Night. We know that Christmas Day is December 25 and that there are twelve days of (or after) Christmas, variously observed as December 25 through January 5 or December 26 through January 6. The twelfth day of Christmas (Twelfth-Day), January 6, is also observed as Epiphany, commemorating the visiting of the Christ Child by the three Magi (Wise Men) with their gifts of gold, incense, and myrrh. The season of Epiphany is also known as Twelfth-Tide; and the night before Twelfth-Day (Epiphany) is known as Twelfth-Night. On Twelfth-Night in Europe, many families gather in their homes to celebrate this feast with friends, food, singing, and gifts. It is at these Twelfth-Night celebrations that "Chalking the Door" is most often observed.

### What Is the Significance of the Chalk and the Magi?

Chalk, a substance made of common elements of the earth, is used by teachers to instruct students and children in their games and play. We use chalk in this service as an ordinary substance put to holy use. Further, chalk will not permanently mar the dwelling. As its image fades from view over time, those who participated in its original placement will remember it and the purpose for which it was intended. In doing so, they may rededicate themselves to that purpose. After a year passes and a new Epiphany arrives, they will have the opportunity once again to celebrate the themes of this season and once again to seek God's blessing on their homes and on those who come and go through the home.

Traditionally we remember the names of the Magi as Caspar, Melchior, and Balthazar — although these names are not to be found in Scripture. During the chalking ceremony, the first letters of these three names — C, M, B — are inscribed on the door frame. Some suggest the C M B may also stand for "Christus Mansionem Benedicat," meaning "May Christ bless this dwelling."

These letters are inscribed between the numbers of the year of the ceremony. Thus, as people are given the opportunity to participate in the chalking of the door, they will inscribe one or more of the symbols: 20 C M B 11 to 20 C M B 12

The symbols are usually written on the upper horizontal piece of the door frame of the front entrance to a home or hospital room; but if younger children or people in wheelchairs participate, encourage them to place the symbols anywhere on the door frame they can comfortably reach.

How Is the Liturgy Organized?

There is great flexibility in organizing the liturgy, but simple is usually best. There may be corporate and individual prayers, Scripture readings, remembrances of the past, and anticipations of the future.

Source is The United Methodist Discipleship Ministries Worship website.

### ➤ Meals on Wheels volunteer an invaluable part of program

LEWISBURG — Jan Bender, 88, is Lewisburg/Milton Meals on Wheels' best volunteer of 2023, said Cindy Walker, Meals on Wheels coordinator at RiverWoods. "You could also say she's been the best volunteer for the past 25 years," she said. "She deserves the honor," said Walker, who nominated Bender as someone who Made a Difference in 2023.



Perhaps the most unseen volunteer of the program is Jan Bender, said Walker. "She comes in every Monday to coordinate the deliveries by sorting the routes, writing the names of each individual on nearly 375 bags per week, remembering who doesn't want sweet desserts or bread, inserting friendly greeting cards and seasonal well wishes, and delivering 1 of 7 routes Monday through Friday." Bender, who grew up in Hastings, has been a Meals on Wheels volunteer for 25 years.

"Her commitment to the program and its values are the solid foundation of the program," Walker said. "Her consistent dedication throughout the years has kept the program going as strong as it is today. Recently, one of the clients she delivers to called the office to say 'thanks for the wonderful food and service. All are appreciated.'"

She has earned these compliments and more. "Jan's contribution to the program is invaluable," Walker said. "All that has been mentioned does not include all she does."

"Throughout my life, I have been the kind of person who volunteers to help others," said Bender. She met her husband at Lycoming College. "He was a pastor." Bender has lived on the RiverWoods campus for 44 years, she said.

Lewisburg/Milton Meals on Wheels has been serving the community since 1972, said Walker, when she nominated Bender.

If there is one word to describe the Meals on Wheels volunteer, it's dedication, Walker said. "Other characteristics of the Meals on Wheels volunteer are kindness, thoughtfulness, attention to detail and compassion." That describes Bender's dedication to the program.

"I've done different jobs for Meals on Wheels in my 25 years with the organization," she said. "Every day I go out and deliver meals to nine people on the RiverWoods campus."

Helping people means a lot to Bender. "Some people on our campus can't cook anymore, and some cannot get out at all. So whoever wants Meals on Wheels, I can help," she said.

The Meals on Wheels delivery person is the outward face of the program. Inwardly, each week, Monday through Friday, dedicated volunteers come into RiverWoods where the meals are prepared and pack the meals. They couldn't be delivered without being packed first.

"Throughout the years there have been a number of program coordinators and a huge number of volunteers. After 51 years some of those who volunteered are no longer with us, however, their contributions then have ensured that the program continues today," Walker said.

People pay for their meals, with the amount depending on their income, Bender said. Some people pay \$1.80, others, \$2.80. And some pay the full price, which starting in January is \$4.95. It is a full meal, with an entree and vegetables, fruit and bread, Bender said.

Bender herself is in good health. "I'm doing fine. I'm 88 and I can walk all over campus every day."

By Rick Dandes rdandes@dailyitem.com Dec 26, 2023

## ➤ Espinosa, The Daily Item's Female Cross-Country Runner of the Year



Being the coach's kid is never as easy as Baylee Espinosa makes it look.

Maybe cross-country, a sport that requires as much individual drive as just about any in a team setting in high school sports, fits that mold, where having internal and external motivation present at all times can be a perfect combination.

Espinosa became the first local girl to win an individual cross-country state title since 2017 and is now The Daily Item's Female Cross-Country Runner of the Year.

Michael Espinosa, who doubles as Lewisburg's girls coach, said his daughter learned "how to take charge of a race," as a sophomore, following a plan the pair put in place for Baylee after her freshman track & field season ended in May.

That learning curve was evident in her performance throughout the season. The last time Espinosa lost a race — Sept. 9 at the PTXC 14 at Kutztown University — she was second to Lillian DiCola by more than 20 seconds. DiCola eventually finished fifth in 3A. That same month, Espinosa blitzed the field at an invitational in Carlisle but left wanting more.

“Rather than going out around 5:40, as it had the year before, the leaders went out in 6:00,” her dad said. “Baylee took off after the mile and pressed herself to the line, but she had been hoping for a PR that day. We spent the rest of the season building up her confidence to take out the first mile of any race, regardless of competition, in roughly 5:35-5:45. This was a big step for her that showed great maturity as a runner.

“The difference between going out ‘as fast as possible’ and going out ‘intentionally hard yet controlled’ is nuanced, but Baylee figured it out.” That was evident at states, where the 10th-grader left no doubt.

Espinosa led by seven seconds after the first mile and by 18 seconds midway through the race. She crossed the line in 18 minutes, 48 seconds, the only runner in Class 2A to finish in less than 19 minutes and 24 seconds ahead of the runner-up.

“Baylee earned her state title the way that you would want a champion to earn it,” Michael Espinosas said. “She followed the plan that we set out after her spring track season ended, trusted her coaches, reflected throughout the process, and learned from her successes and setbacks. If I had to guess, plenty of outsiders would think that she succeeds because it comes naturally — that it is because of her genes. I can tell you firsthand that is not true. She has talent, but without dedication to her training during the summer and a passion to show up and do the work every day during the fall season, those gifts alone would never amount to what she has accomplished.

“From race to race, even when she was winning by large margins, she found elements of her races to improve upon. By the time she toed the line at States, she was ready to run her race.”

The last girl from District 4 to win an individual state title in cross-country was Lewisburg’s Sophia Ziemian in 2007. The only other girl to pull off that feat was Line Mountain’s Kandie Ebersole in 1991 in a competition that has been held annually since 1974 for the girls.

Edited from article by William Bowman [bbowman@dailyitem.com](mailto:bbowman@dailyitem.com) Dec 17, 2023 Updated Dec 26, 2023.

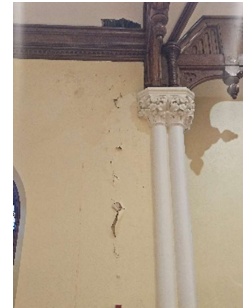
### ➤ Attention Beaver Family

Over the next couple of weeks there will be two areas inside the building that will be under construction to fix safety issues and water damage repair. One area is the stair case ceiling leading to the youth rooms. The ceiling has a major crack that needs to be repaired, as does the side wall going up the stairs.



The second location is located inside the sanctuary by the bell tower door. This was caused by a leak in the roof and improperly sized rain gutters. The roof has been repaired and the gutters replaced with correctly size ones. The Trustees are asking for your patience and respect to these areas as they will be off limits during the construction process. Using the Parker Building or Apple Tree Alley entrances during this time will be very helpful. If you need a door code to access the Parker Building entrance, please contact the church office.

If you have questions, please see Chuck Root, Nick Persing or Pastor Sue.



## **BEAVER MINISTRIES AND OPPORTUNITIES TO SERVE**

### **Beacon Free Shop**

Beacon Free Shop was held Saturday, December 16 and provided personal hygiene products to 81 households. 236 individuals make up these households. Beacon clients were treated to Christmas carols, led by Brooke Persing, Nonie Martin, and Santa and Mrs. Claus (see picture).



Several generous donations have been received from Beaver congregants. In addition, we have just learned Beacon was selected as a recipient of the Lindig Lewisburg Foundation Fund grant. \$3,400 will be awarded to Beacon to provide personal hygiene items to residents of the Lewisburg Borough. Approximately one-third of past Beacon clients reside within the borough.

As always, thank you to the volunteers and donors (monetary and inventory) from our generous community. We look forward to a successful 2024.

For additional information contact Christy Brouse at 570-238-5707 or [beacon@beavermethodist.org](mailto:beacon@beavermethodist.org).

### **United Youth Group**

During the month of January the United Youth Group will be meeting at Beaver Memorial UM. The meetings are on Sunday January 7th and 28th from 5:30 to 7:30 pm. On the 7th we will be talking about resolutions. On the 28th it will be a games night. If anyone got new games for Christmas that they would like us to play they should bring them with them. All 6th through 12th grade youth are invited to join us. The United Youth Group will also be having their annual lock in at Christ's on January 12th through the 13th from 6:00 pm to 9:00 am. It will be a night filled with games, including the usual nerf gun battle, and a midnight movie. All youth coming to the lock-in should bring a treat to share, and their sleeping gear.

### **Busy Beaver**

Busy Beaver has 52 children enrolled as of December 31, 2023. In January we will be adding 3 new children and another in February. At that point, we will be at maximum capacity. 5 of our current families are all on the waitlist for infant spots in 2024! As our Preschool kiddos graduate out to Kindergarten this summer, we will continue having children transition rooms to get our new infants started.

The month of December was quite exciting! We had our annual Christmas party with a visit from Santa Claus! All the children received books as a small Christmas gift from BB. A fun time was had by all! Each December, Busy Beaver does an outreach and gathers donations for a local outreach program. For the second year in a row, we collected donations for the Beacon Shop! Families donated toothpaste, toothbrushes, and bars of soap.

We are very excited to see what 2024 has in store and we are even more excited to welcome new families to our Beaver family!

- Charlene Reigle Director, Busy Beaver

### **Kinderfolk**

Kinderfolk is very excited to begin the 2024 year with oodles of winter fun, learning, and exploration. During the first few weeks of January we will be creating projects and conducting science experiments pertaining to winter and the elements of winter such as snow, ice, and sleet. We will also be learning about arctic animals which includes what makes them unique and their habitat.

Beginning the week of January 29th, we will start our "Letter of the Week" theme which will continue the entire spring semester. We use the "Letter of the Week" to teach the children phonics which correlates sounds with letters or groups of letters in alphabet writing. We also begin basic tracing and free handwriting letters and basic words. The AM class gets a small introduction with the letters and sounds, while the Pre-K class will have more in-depth teaching to prepare them in their Kindergarten readiness.

- Julia Umstead Director, Kinderfolk Preschool

### **Altar Flowers**

If you enjoy the beautiful flowers displayed on the altar each Sunday, please consider signing up to sponsor altar flowers. You can use the signup sheet on the cabinet in the narthex entry way or contact the church office for available dates. The cost is \$45 for two vases.

### **DIG Furniture Bank**

DIG, one of Beaver's supported community missions, restores dignity and promotes stability by redirecting used furniture and household items to local families in need at no cost. DIG helps people get back on their feet after homelessness, incarceration, domestic violence and other significant life changes. DIG is located at 14 Elm Street, Milton. Their phone number is 570.658-9880. Their web address is [WWW.DIGFB.ORG](http://WWW.DIGFB.ORG) and email address is [INFO@DIGFB.ORG](mailto:INFO@DIGFB.ORG).

### **Union County Giving Closet**

This ministry being housed at First Presbyterian Church, provides new and gently used clothing for children aged newborn through Grade 12, whose families are enrolled in the Eastern Union County Food Bank Program. They are looking for monetary contributions and donations of clothing/shoes/reusable bags/gift cards to local stores and also need volunteers. You can email them at [ucgivingcloset@gmail.com](mailto:ucgivingcloset@gmail.com) or call 570-524-4419.

### **Eat Share Program**

The mission of this program is to extend kindness through food sharing. The focus is on neighbors providing warm meals to members of the community who cannot do that for various reasons. No proof of need is required to request or receive a meal. You can sign up to volunteer to cook and/or deliver meals. You can also donate to help provide ingredient/food purchases. Contact them at [eatsharelove@yahoo.com](mailto:eatsharelove@yahoo.com) or call 570-971-8831.



**Join Our Tech Team!**

If you would be willing to learn how to use the cameras on Sunday mornings, please let one of the tech team (Nick Persing, Todd Fogle, Deena Eberhart or Tim Taylor) know. They will train you and promise it is not difficult. Help us keep connected with those who are not able to join us in person on Sunday mornings.

**Musicians/Vocalists Wanted!**

If you would be willing to provide special music on occasion for Sunday worship, please let Brooke Persing know. We want to have a nice variety: vocal, instrumental, and combinations of those – we know there is talent among us. Vocal Choir rehearsals are held on Thursdays at 7:00PM in the Choir Room on the lower level.

\*\*\*\*\*

**We Have Convenient Methods of Giving!**

Mail to Beaver Memorial at 42 S. 3<sup>rd</sup> St. Lewisburg, 17837  
drop into our Drop Box outside the office door or  
go to our website: [www.beavermethodist.org](http://www.beavermethodist.org) and click on “Giving”.  
Thank you!

\*\*\*\*\*

**EVENTS**

AT BEAVER MEMORIAL UMC			
Event	Day/Date	Time	Location
New Beginnings Adult Sunday School	Sunday	9:00 AM	Parsonage
NA Meeting	Monday	7:00 PM	Fellowship Hall
NA Meeting	Wednesday	7:30 PM	Fellowship Hall
Leadership Team Meetings	3 <sup>rd</sup> Tuesday of the month	6:30 PM	Fellowship Hall
AA Meeting	Saturday	7:00 PM	Fellowship Hall
Beacon Shop	3 <sup>rd</sup> Saturday of the month	10:00 AM	Beaver Memorial UMC
IN THE COMMUNITY			
Event	Day/Date	Time	Location
Pub Theology	3 <sup>rd</sup> Thursday of the month	6:00 PM	Bull Run Tap House

**BMUMC Staff includes:**

Position	Individual	Position	Individual
Church Administrator	Allison Morgan	Treasurer	Shirley Brough
Custodian	Jim Gulden	Youth Group Director	Charlene Rineer
Choir Director	Brooke Persing	Pianist	Ryan Hill
Busy Beaver Day Care Director	Charlene Reigle	Kinderfolk Preschool Director	Julia Umstead
Video Team	Nick Persing, Todd Fogle, Deena Eberhart, Timothy Taylor		
Leadership Team	Martha Root - <a href="mailto:croot@bucknell.edu">croot@bucknell.edu</a> Rev. Sue Jamison - <a href="mailto:sjamison@susumc.org">sjamison@susumc.org</a> Ralph Hibbs - <a href="mailto:rhibbs@windstream.net">rhibbs@windstream.net</a> Patty Johnston - <a href="mailto:hoodj1973@ptd.net">hoodj1973@ptd.net</a> David Deibler-Gorman - <a href="mailto:dgorman@windstream.net">dgorman@windstream.net</a> Gabrielle Taylor – <a href="mailto:taylorfamily@ptd.net">taylorfamily@ptd.net</a> Heidi Gilmore – <a href="mailto:heidicgilmore@gmail.com">heidicgilmore@gmail.com</a> Kathy McKibben – <a href="mailto:klmckibben@gmail.com">klmckibben@gmail.com</a> Krystie Byrum – <a href="mailto:professorprmaven@gmail.com">professorprmaven@gmail.com</a> Chuck Root – <a href="mailto:croot@bucknell.edu">croot@bucknell.edu</a> Nick Persing – <a href="mailto:persing191983@gmail.com">persing191983@gmail.com</a> Travis Curry – <a href="mailto:travise Curry@yahoo.com">travise Curry@yahoo.com</a>		

- Submit content for the newsletter to [tlcinhisservice@yahoo.com](mailto:tlcinhisservice@yahoo.com) by the 18<sup>th</sup> of the month prior to the newsletter.